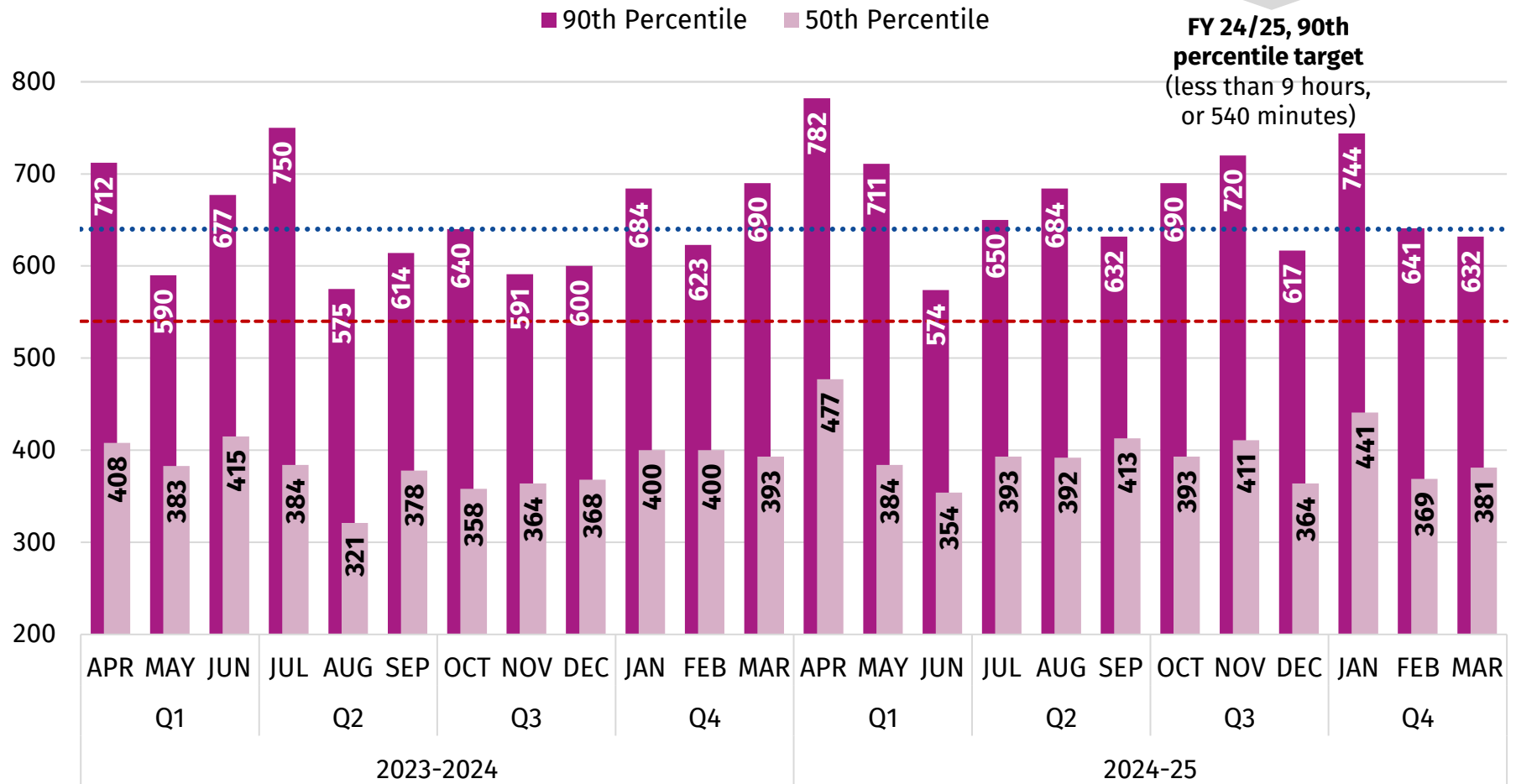


# Length of Stay (LOS) in the Emergency Department (ED) for admitted patients

**90th percentile baseline**  
(FY2022/23 actuals:  
640 minutes)

-100 minutes

**FY 24/25, 90th percentile target**  
(less than 9 hours,  
or 540 minutes)



**ED Length of Stay (LOS) for Admitted Patients:** ED length of stay is defined as the time from triage to the time the patient leaves the ED to a hospital bed. Measured in minutes. The 90th percentile is the maximum length of time in which 9 of 10 patients have completed their ED visit.